

UNIT 2 Data Model

Data Model gives us an idea that how the final system will look like after its complete implementation. It defines the data elements and the relationships between the data elements. Data Models are used to show how data is stored, connected, accessed and updated in the database management system.

A data model comprises of three components:

1. A structural part, consisting of a set of rules according to which databases can be constructed.
2. A manipulative part, defining the types of operation that are allowed on the data (this includes the operations that are used for updating or retrieving data from the database and for changing the structure of the database).
3. Possibly a set of integrity rules, which ensures that the data is accurate.

The purpose of a data model is to represent data and to make the data understandable.

They fall into three broad categories:

- Object Based Data Models
- Physical Data Models
- Record Based Data Models

The object based and record based data models are used to describe data at the conceptual and external levels, the physical data model is used to describe data at the internal level.

Object Based Data Models

Object based data models use concepts such as entities, attributes, and relationships.

- An entity is a distinct object (a person, place, concept, and event) in the organization that is to be represented in the database.
- An attribute is a property that describes some aspect of the object that we wish to record, and
- A relationship is an association between entities.

Some of the more common types of object based data model are:

- **Entity-Relationship**
- **Object Oriented**

Physical data models describe how data is stored in the computer, representing information such as record structures, record ordering, and access paths.

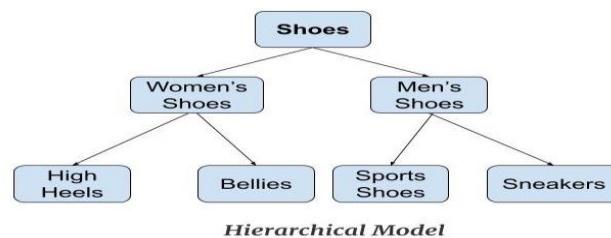
Record based models are so named because the database is structured in fixed format records of several types. Each record type defines a fixed number of fields, or attributes, and each field is usually of a fixed length.

The three most widely accepted record based data models are:

- **Hierarchical Model**
- **Network Model**
- **Relational Model**

Hierarchical Model

Hierarchical Model was the first DBMS model. This model organises the data in the hierarchical tree structure. The hierarchy starts from the root which has root data and then it expands in the form of a tree adding child node to the parent node. This model easily represents some of the real-world relationships like food recipes, sitemap of a website etc. *Example:* We can represent the relationship between the shoes present on a shopping website in the following way:



Features of a Hierarchical Model

1. **One-to-many relationship:** The data here is organised in a tree-like structure where the one-to-many relationship is between the data types. Also, there can be only one path from parent to any node. *Example:* In the above example, if we want to go to the node *sneakers* we only have one path to reach there i.e. through men's shoes node.
2. **Parent-Child Relationship:** Each child node has a parent node but a parent node can have more than one child node. Multiple parents are not allowed.
3. **Deletion Problem:** If a parent node is deleted then the child node is automatically deleted.
4. **Pointers:** Pointers are used to link the parent node with the child node and are used to navigate between the stored data. *Example:* In the above example the '*shoes*' node points to the two other nodes '*women shoes*' node and '*men's shoes*' node.

Advantages of Hierarchical Model

- It is very simple and fast to traverse through a tree-like structure.
- Any change in the parent node is automatically reflected in the child node so; the integrity of data is maintained.

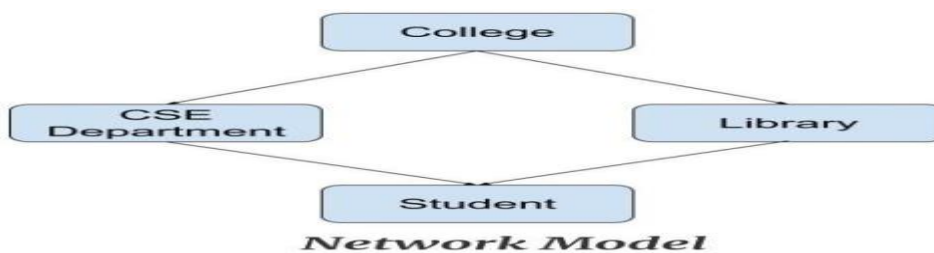
Disadvantages of Hierarchical Model

- Complex relationships are not supported.

- As it does not support more than one parent of the child node so if we have some complex relationship where a child node needs to have two parent node then that can't be represented using this model.
- If a parent node is deleted then the child node is automatically deleted.

Network Model

This model is an extension of the hierarchical model. It was the most popular model before the relational model. This model is the same as the hierarchical model; the only difference is that a record can have more than one parent. It replaces the hierarchical tree with a graph. **Example:** In the example below we can see that node student has two parents i.e. CSE Department and Library. This was earlier not possible in the hierarchical model.



Features of a Network Model

1. **Ability to merge more Relationships:** In this model, as there are more relationships so data is more related. This model has the ability to manage one-to-one relationships as well as many-to-many relationships.
2. **Many paths:** As there are more relationships so there can be more than one path to the same record. This makes data access fast and simple.
3. **Circular Linked List:** The operations on the network model are done with the help of the circular linked list. The current position is maintained with the help of a program and this position navigates through the records according to the relationship.

Advantages of Network Model

- The data can be accessed faster as compared to the hierarchical model. This is because the data is more related in the network model and there can be more than one path to reach a particular node. So the data can be accessed in many ways.
- As there is a parent-child relationship so data integrity is present. Any change in parent record is reflected in the child record.

Disadvantages of Network Model

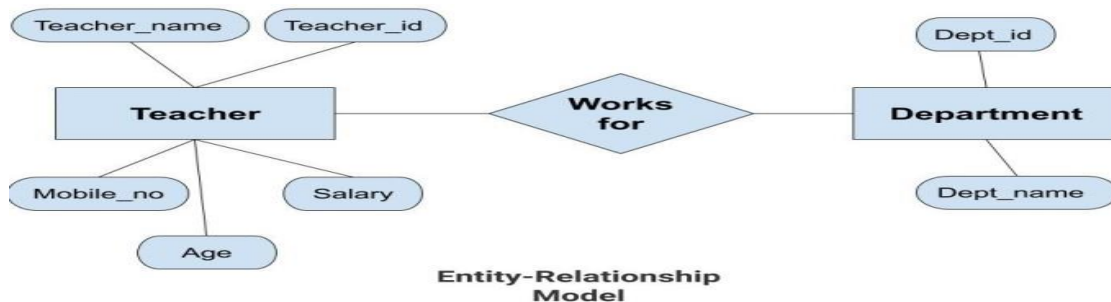
- As more and more relationships need to be handled the system might get complex. So, a user must be having detailed knowledge of the model to work with the model.
- Any change like updating, deletion, insertion is very complex.

Entity-Relationship Model

Entity-Relationship Model or simply ER Model is a high-level data model diagram. In this model, we represent the real-world problem in the pictorial form to make it easy for the stakeholders to understand. It is also very easy for the developers to understand the system by just looking at the ER diagram. We use the ER diagram as a visual tool to represent an ER Model. ER diagram has the following three components:

- **Entities:** Entity is a real-world thing. It can be a person, place, or even a concept. Example: Teachers, Students, Course, Building, Department, etc are some of the entities of a School Management System.
- **Attributes:** An entity contains a real-world property called attribute. This is the characteristics of that attribute. Example: The entity teacher has the property like teacher id, salary, age, etc.
- **Relationship:** Relationship tells how two attributes are related. Example: Teacher works for a department.

Example:



In the above diagram, the entities are **Teacher** and **Department**. The attributes of **Teacher** entity are **Teacher_Name**, **Teacher_id**, **Age**, **Salary**, **Mobile_Number**. The attributes of entity **Department** entity are **Dept_id**, **Dept_name**. The two entities are connected using the relationship. Here, each teacher works for a department.

Features of ER Model

- **Graphical Representation for Better Understanding:** It is very easy and simple to understand so it can be used by the developers to communicate with the stakeholders.
- **ER Diagram:** ER diagram is used as a visual tool for representing the model.
- **Database Design:** This model helps the database designers to build the database and is widely used in database design.

Advantages of ER Model

- **Simple:** Conceptually ER Model is very easy to build. If we know the relationship between the attributes and the entities we can easily build the ER Diagram for the model.
- **Effective Communication Tool:** This model is used widely by the database designers for communicating their ideas.
- **Easy Conversion to any Model:** This model maps well to the relational model and can be easily converted relational model by converting the ER model to the table. This model can also be converted to any other model like network model, hierarchical model etc.

Disadvantages of ER Model

- **No industry standard for notation:** There is an industry standard for developing an ER model. So one developer might use notations which are not understood by other developers.
- **Hidden information:** Some information might be lost or hidden in the ER model. As it is a high-level view so there are chances that some details of information might be hidden.

Relational Model

Relational Model is the most widely used model. In this model, the data is maintained in the form of a two-dimensional table. All the information is stored in the form of row and columns. The basic structure of a relational model is tables. So, the tables are also called relations in the relational model. **Example:** In this example, we have an Employee table.

Emp_id	Emp_name	Job_name	Salary	Mobile_no	Dep_id	Project_id
AfterA001	John	Engineer	100000	9111037890	2	99
AfterA002	Adam	Analyst	50000	9587569214	3	100
AfterA003	Kande	Manager	890000	7895212355	2	65

EMPLOYEE TABLE

Features of Relational Model

- **Tuples:** Each row in the table is called tuple. A row contains all the information about any instance of the object. In the above example, each row has all the information about any specific individual like the first row has information about John.
- **Attribute or field:** Attributes are the property which defines the table or relation. The values of the attribute should be from the same domain. In the above example, we have different attributes of the employee like Salary, Mobile no, etc.

Advantages of Relational Model

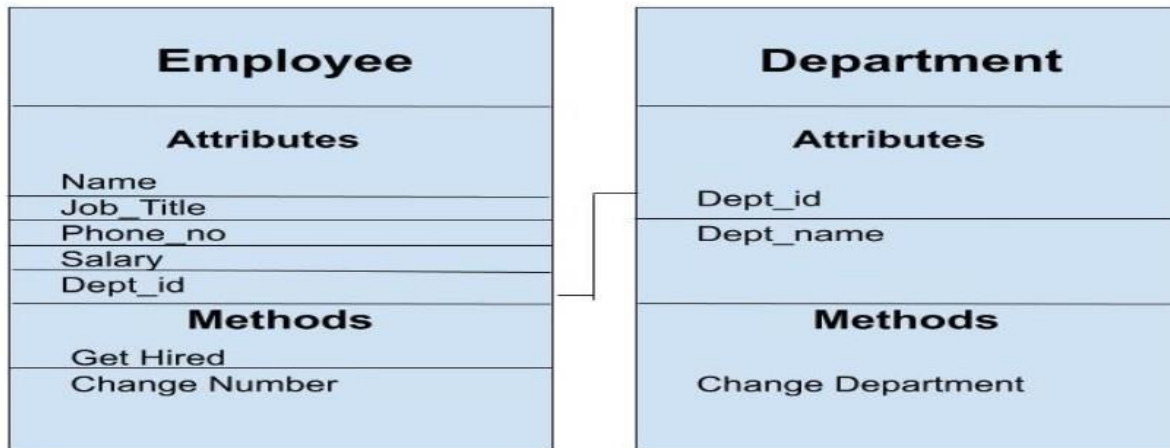
- **Simple:** This model is simpler as compared to the network and hierarchical model.
- **Scalable:** This model can be easily scaled as we can add as many rows and columns we want.
- **Structural Independence:** We can make changes in database structure without changing the way to access the data. When we can make changes to the database structure without affecting the capability to DBMS to access the data we can say that structural independence has been achieved.

Disadvantages of Relational Model

- **Hardware Overheads:** For hiding the complexities and making things easier for the user this model requires more powerful hardware computers and data storage devices.
- **Bad Design:** As the relational model is very easy to design and use. So the users don't need to know how the data is stored in order to access it. This ease of design can lead to the development of a poor database which would slow down if the database grows.

Object-Oriented Data Model

The real-world problems are more closely represented through the object-oriented data model. In this model, both the data and relationship are present in a single structure known as an object. We can store audio, video, images, etc. in the database which was not possible in the relational model (although you can store audio and video in relational database, it is advice not to store in the relational database). In this model, two are more objects are connected through links. We use this link to relate one object to other objects. This can be understood by the example given below.



Object_Oriented_Model

In the above example, we have two objects Employee and Department. All the data and relationships of each object are contained as a single unit. The attributes like Name, Job-title of the employee and the methods which will be performed by that object are stored as a single object. The two objects are connected through a common attribute i.e. the Department_id and the communication between these two will be done with the help of this common id.

Advantages

The advantages of the object-oriented model are as follows –

- Semantic (meaningful) content is added.
- Support for complex objects.
- Inheritance promotes data integrity.

Disadvantages

The disadvantages of the object-oriented model are as follows:

- Slow development of standards.
- Slow transactions.